

HILLSDALE FREE PUBLIC LIBRARY ANNUAL REPORT 2009



“May We Recommend Our Favorites?”

SUBMITTED BY

**DAVID J. FRANZ
LIBRARY DIRECTOR**

**WITH ASSISTANCE FROM
LAURA LEONARD
LIBRARIAN**

**AND
CINDY GREENWALD
CHILDREN’S LIBRARIAN**

FEBRUARY 2009

Executive summary.....	- 2 -
I. Circulation statistics	- 3 -
Daily circulation averages 2006 - 2009	- 5 -
Average hourly circulation by day 2009.....	- 6 -
Circulation by material type and department.....	- 6 -
Reciprocal borrowing.....	- 9 -
Reciprocal borrowing 2000 – 2009.....	- 9 -
Electronic loans.....	- 10 -
II. Collections.....	- 11 -
Collection diversity.....	- 12 -
Collection age	- 13 -
III. Hours of service	- 13 -
Manpower	- 14 -
Public Computer Usage	- 14 -
Volunteers	- 15 -
IV. Patron registration and library use.....	- 16 -
V. Programs	- 17 -
VI. Other activities.....	- 17 -
2009 Statement of value.....	- 18 -
2009 OPERATING BUDGET.....	- 19 -
Librarian’s Appendix	- 21 -
Highlights from the 2008 New Jersey Library Analyses published by the State Library.....	- 26 -

Executive summary

Highlights from the year:

- Circulation increased 4% .
- Loans to other libraries increased 12%.
- Our operating budget increased by only 1.9%.
- Manpower increased by only 1/10th of a full time equivalent.
- The cost per circulation remains one of the lowest in the Bergen County Cooperative Library System. In 2009 it was **\$3.17** per circulation. (A drop from \$3.30 in 2008!) What can you buy for that at Barnes & Noble? A tall latte.
- There were 125,716 visitors to the library.
- 37% of Hillsdale residents used a library card at least once during the year. The BCCLS system average is 28%.

The library circulated 231,324 items. This a conservative total of over **\$3.4 million** in material value circulated on an operating budget of \$733,476. This is a return on investment of 508% based upon the Borough's contribution of \$683,528. The library's circulation is far above that of local averages for libraries serving a similar population size and operating in our budget range. The library's overall operating budget closely follows local averages. On a percentage basis, we spent less on salaries and wages and more on materials than local averages. In summary, the library continues to operate at a very high level of efficiency and productivity.

Statewide comparisons are based upon 2008 data, the latest available. Hillsdale is compared to other libraries serving between 10,000 and 15,000 residents (53 libraries). Hillsdale is also compared to other libraries with between \$500,000 and \$750,000 annual operating budgets (40 libraries).

Comparisons to similar Bergen libraries are limited to those serving populations between 7,000 and 13,000 with 2008 operating budgets between \$600K and \$800K. The Bergen County Cooperative Library System statistics are available at: <http://www.bccls.org>

The BCCLS libraries used for comparison are:

Closter, Cresskill, Montvale, Oakland, Oradell, Park Ridge, Ridgefield, Ridgefield Park, River Edge, River Vale, Saddle Brook, Waldwick, Washington Twp, Westwood.

I. Circulation statistics

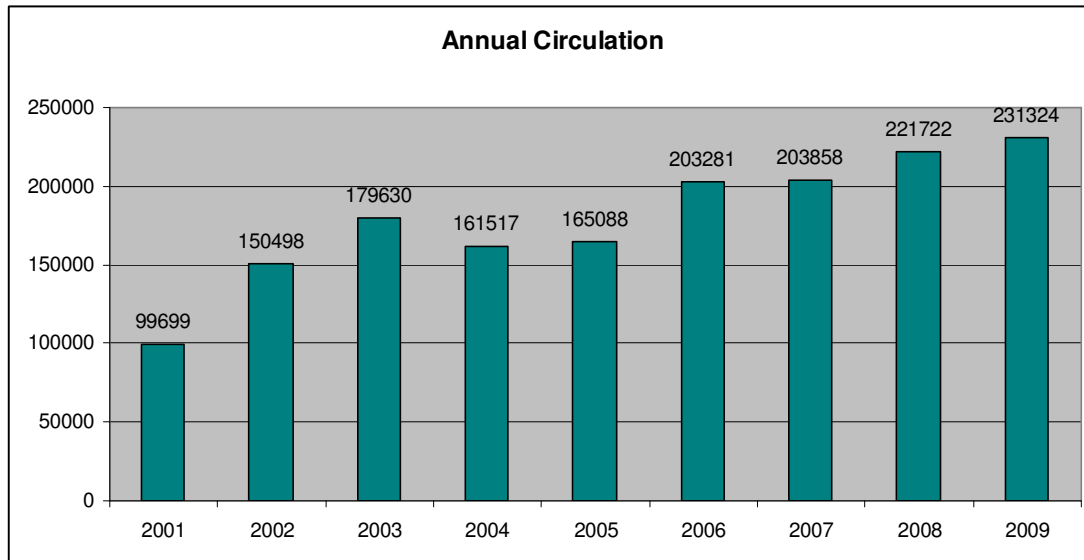
The computer registers a circulation every time an item is charged to a patron. Renewals also register as circulations. Approximately 23% of the circulation reported is a result of renewals. The following circulation reflects the number of Hillsdale items charged out to either Hillsdale borrowers or to borrowers from other libraries. In 2009 a new record was established at **231,324**. This includes 668 downloadable audio books.

The 2009 average for similar Bergen libraries was 133,126.

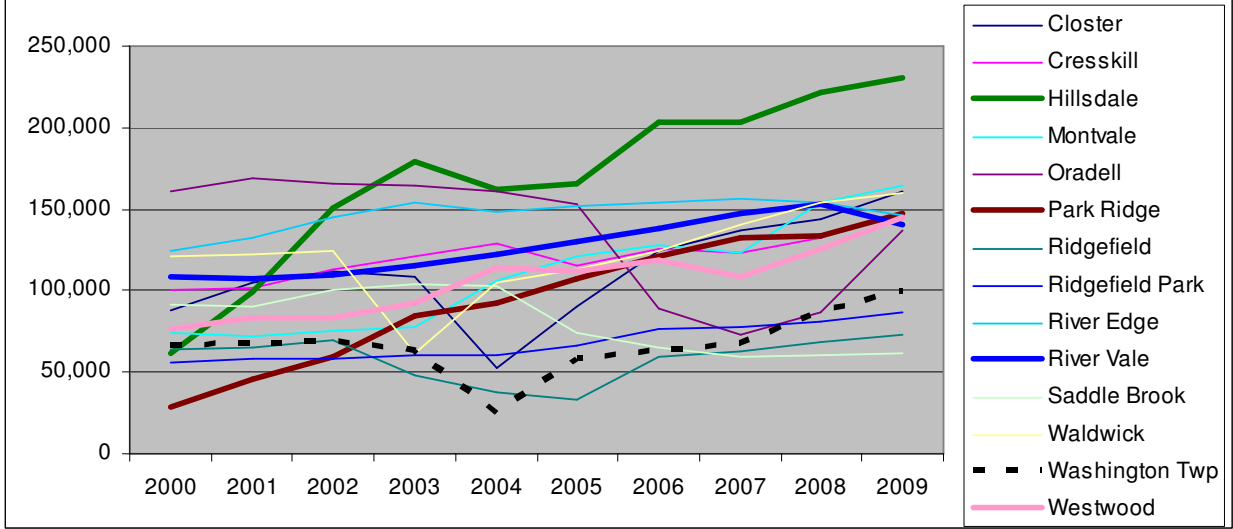
Hillsdale's 2009 circulation per capita was 23 items.

The 2009 average circulation per capita for similar Bergen libraries was 13 items.

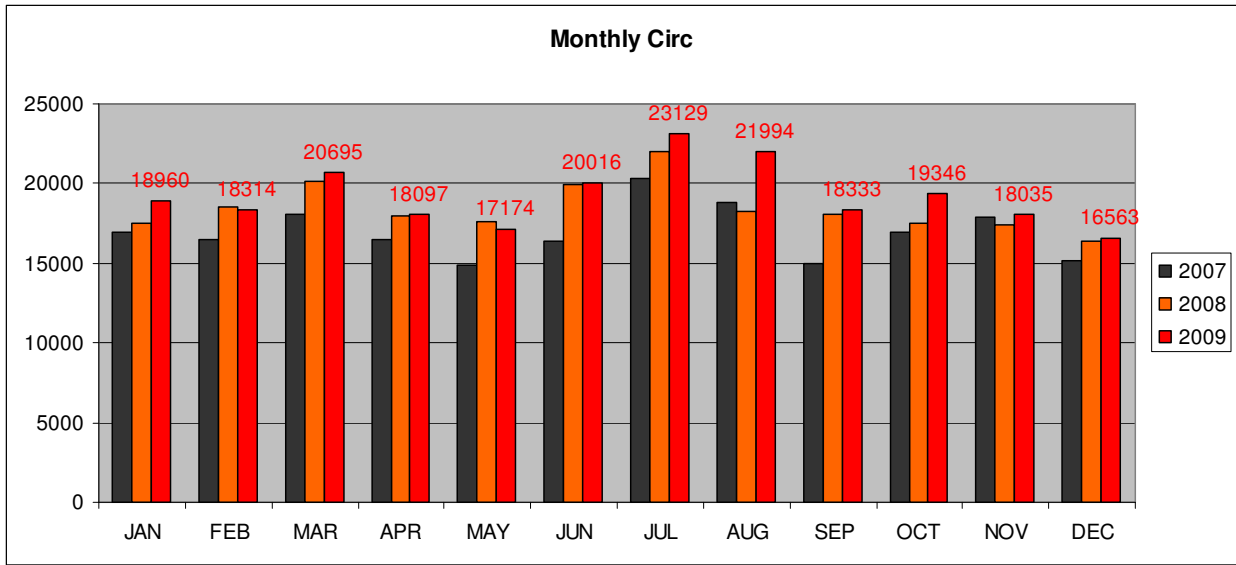
Annual circulation totals 2001 – 2009.



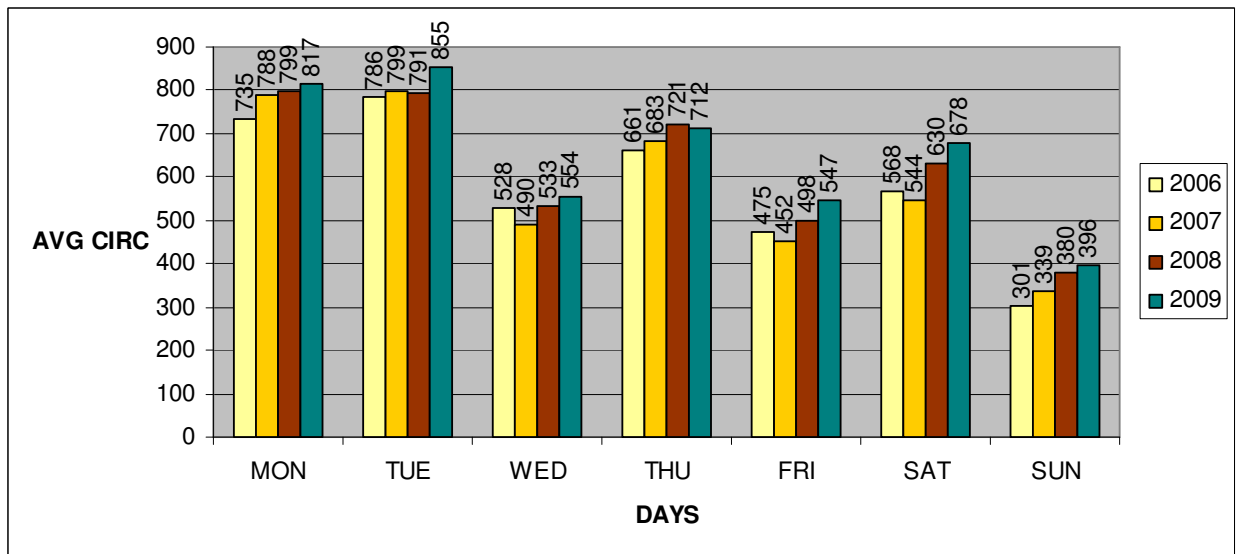
Circulation Trends of BCCLS Libraries



Overall circulation by month 2007-2009.

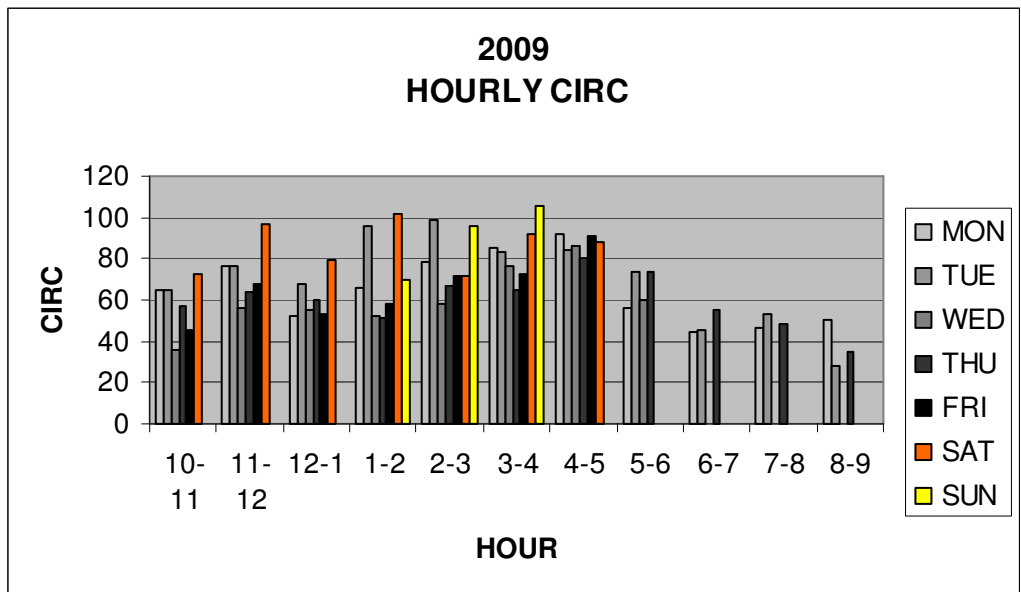


Daily circulation averages 2006 - 2009.



Average hourly circulation by day 2009.

HOUR	MON	TUE	WED	THU	FRI	SAT	SUN
10-11	65	64	36	57	46	73	
11-12	76	76	57	63	68	97	
12-1	52	68	55	60	53	79	
1-2	66	96	52	51	58	101	69
2-3	78	99	58	67	72	71	96
3-4	85	83	76	65	73	92	106
4-5	92	84	86	80	91	89	
5-6	56	74	60	73			
6-7	44	46		55			
7-8	47	53		48			
8-9	51	28		35			



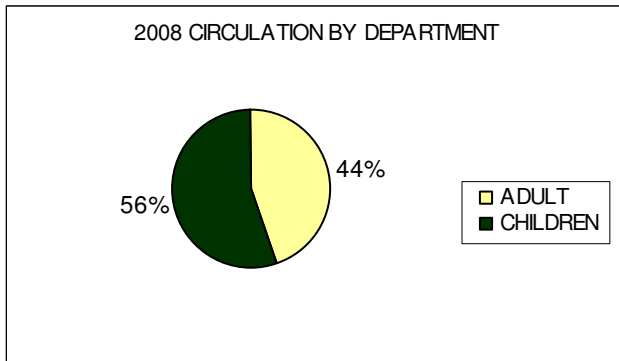
Circulation by material type and department.

The adult collection continues to show signs of improvement. The ratio of adult circulation compared to the busy children’s room improved by three percentage points to 47%. By comparison, in 2001 adult materials accounted for only 33% of all circulation. Our children’s room has always been popular. Generally, children’s circulation represents between 30 and 40% of other BCCLS libraries circulation.

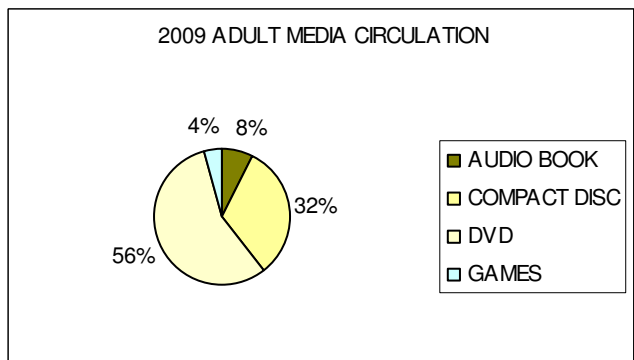
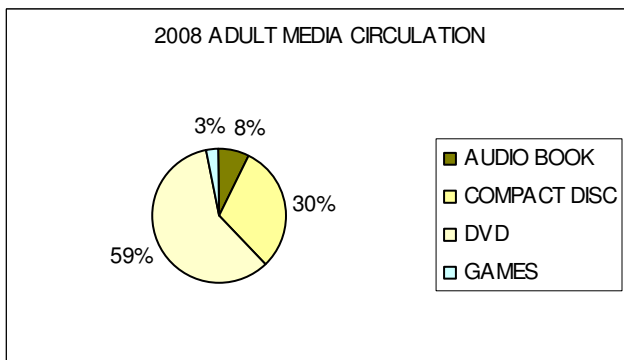
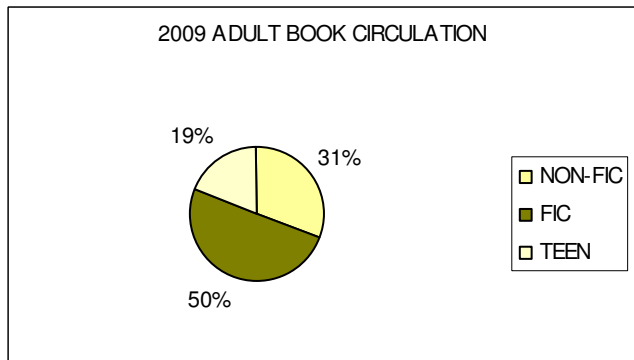
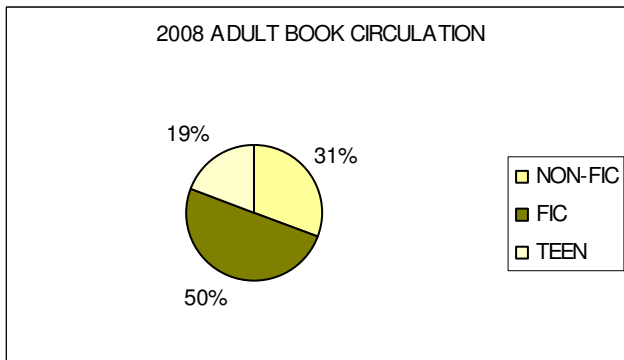
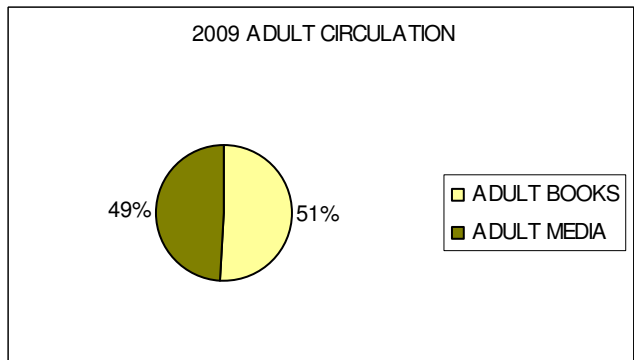
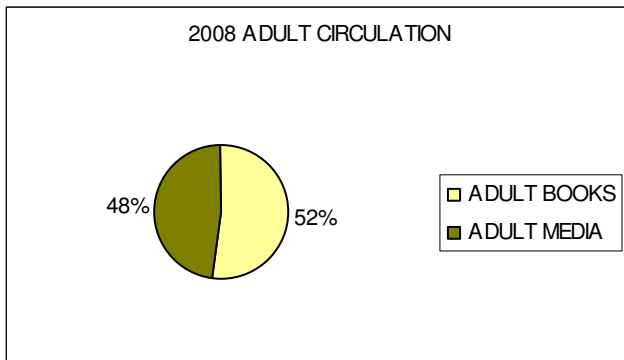
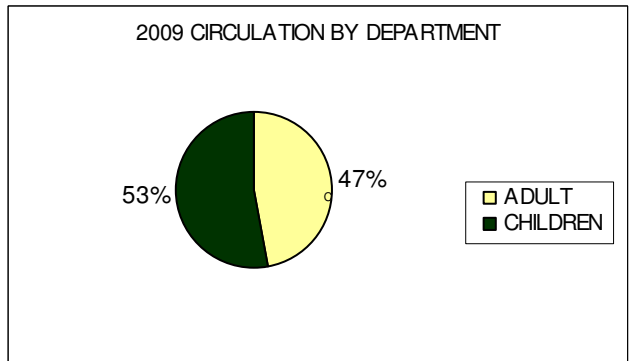
There was no dramatic change in the proportional circulation between books and media.

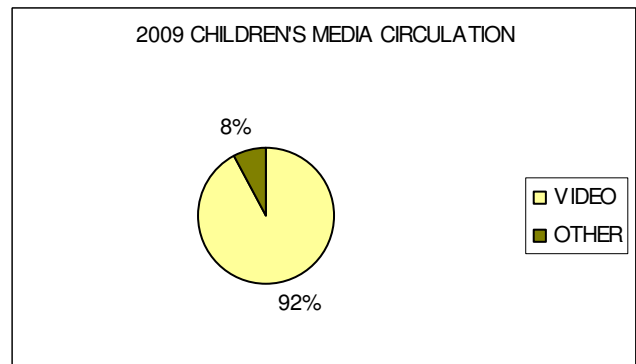
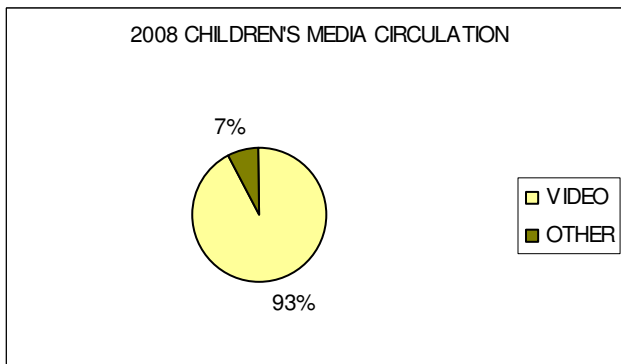
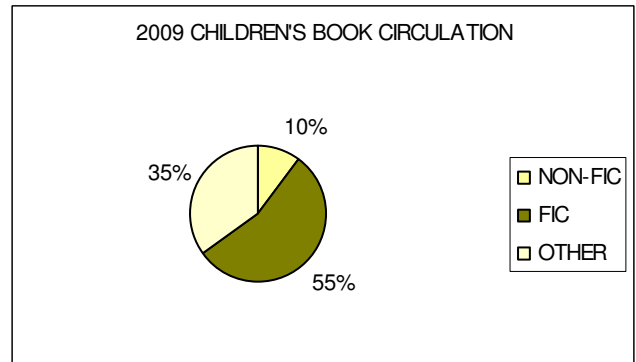
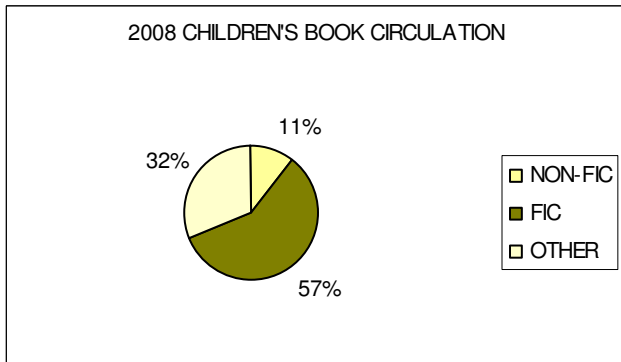
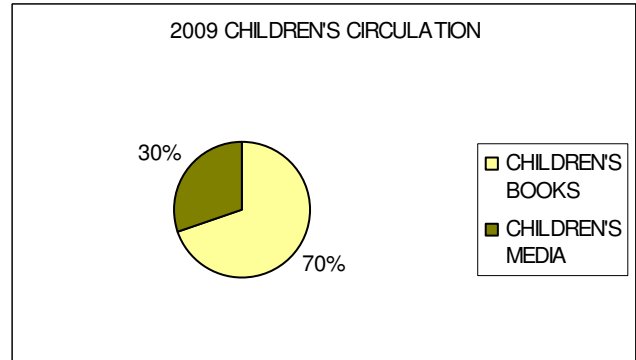
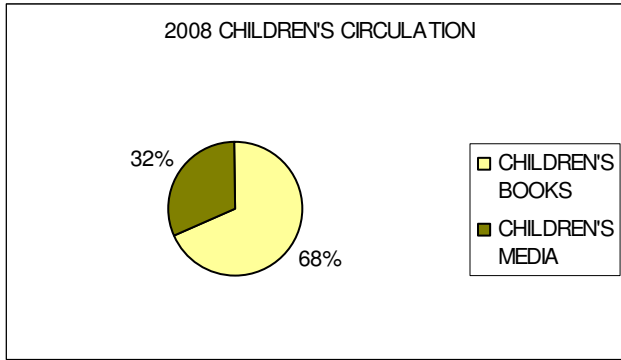
Children’s books continue to account for 70% of juvenile circulation.

Circulation by departments and material types
2008



Circulation by departments and material types
2009





Notes: "Other" children's books include board books, picture books, easy readers and graphic novels.

"Other" children's media include audio books, CD-Rom, and compact discs.

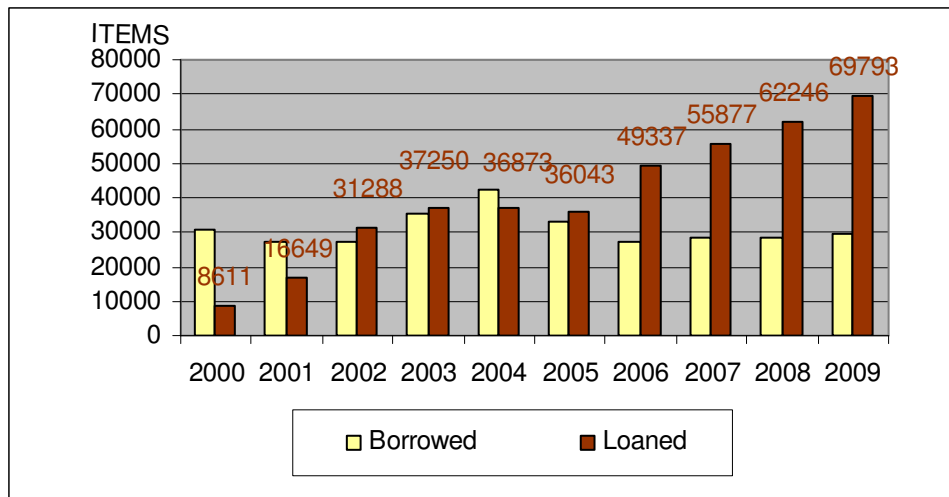
Reciprocal borrowing

The Hillsdale Free Public Library participates in the Bergen County Cooperative Library System (BCCLS). Members of Hillsdale Library may borrow directly from other BCCLS Libraries or they may choose to borrow via electronic loan request. Reciprocal borrowing statistics refer to Hillsdale items lent to other BCCLS libraries and items borrowed from other BCCLS libraries.

In 2009 the number of items loaned grew by 12%. This combined with only a 3% increase in number of items borrowed may be attributed to a collection that continues to fill local patron demand. Note: Washington Twp. accounted for 9.3% of our circulation. Westwood accounted for 4.9%. River Vale accounted for 3.8%.

The library receives a reimbursement from BCCLS whenever lending exceeds borrowing (net plus). The net plus reimbursements received for 2009 totaled \$17,252.

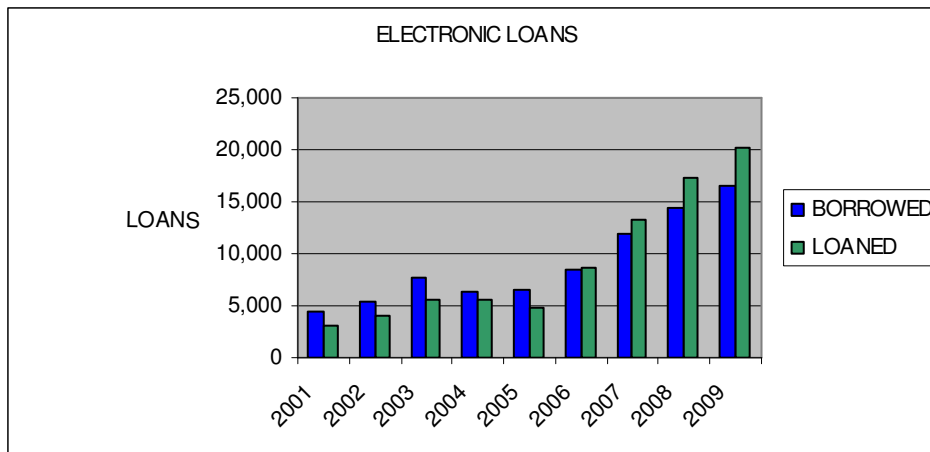
Reciprocal borrowing 2000 – 2009.



	BORROWED		LOANED	
2002	27456	1%	31288	88%
2003	35356	29%	37250	19%
2004	42199	19%	36873	-1%
2005	33098	-22%	36043	-2%
2006	27388	-17%	49337	37%
2007	28165	3%	55877	13%
2008	28504	1%	62246	11%
2009	29325	3%	69793	12%

Electronic loans

Electronic Loans are a subset of reciprocal circulation. Instead of patrons doing the work, library staff devote their time to handling these tasks. Every loan request initiated by a Hillsdale patron is processed by a staff member who determines if Hillsdale owns the item or if a request must be forwarded via e-mail to another BCCLS library. Requests from other libraries are received via e-mail. These items are pulled from the shelves, checked out to the patron, and packaged for delivery. When receiving items from libraries they are unpackaged, routed in, and the patron is contacted. Fulfilling loan requests from other libraries is a time intensive activity. Each transaction may take an average of 2 minutes in staff time. In 2009, processing electronic loans would consume 67% of a full-time (35 hour/wk) staff member's time. In 2001, it was 14%.



	BORROWED	CHANGE	LOANED	CHANGE
2001	4,345		3,105	
2002	5,458	25.6%	4,001	28.9%
2003	7,611	39.4%	5,495	37.3%
2004	6,261	-17.7%	5,643	2.7%
2005	6,530	4.3%	4,715	-16.4%
2006	8,430	29.1%	8,738	85.3%
2007	11,848	40.5%	13,212	51.2%
2008	14,441	21.9%	17,335	31.2%
2009	16,444	13.9%	20,282	17.0%

II. Collections

Materials are constantly added and withdrawn from the library. The library expended \$96,998 (13.2% of the budget) on materials in 2009. This is a \$3,717 decrease from 2008. A small percentage of the collection is acquired by donation.

The library collections can be divided into many subcategories. For the purposes of this report only general categories are presented. Miscellaneous items and periodicals are excluded from the collection counts and pie charts. Young Adult books combine both fiction and non-fiction titles. Young Adult audio books are reported under adult audio visual materials.

Media represents 14% of the adult collection and accounts for 49% of adult circulation. Media represents 14% of the children's collection and accounts for 30% of children's circulation. Loose issue magazines are omitted from these calculations. Magazines account for 1.6% of all circulation. The adult audio book collection represents 2% of the collection and does 2% of the circulation. By contrast, adult non-fiction represents 18% of the overall collection but accounts for only 7% of overall circulation.

The 2008 Bergen libraries average materials budget was \$107,001 or 14.5%

	Year End 2008	Added 2009	Withdrawn 2009	Year End 2009
Adult Collections				
Books - NF	12420	813	452	12781
Books - FIC	10938	1463	737	11664
Books - Ref	1227	71	295	1003
Books - Teen	3852	776	661	3966
Audio Visual	4490	961	238	5214
Children's Collections				
Books	33279	3657	2296	34640
Audio Visual	3144	529	672	3001

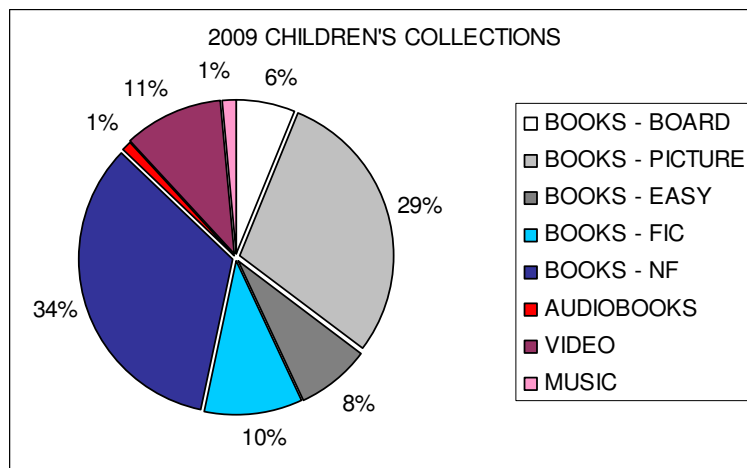
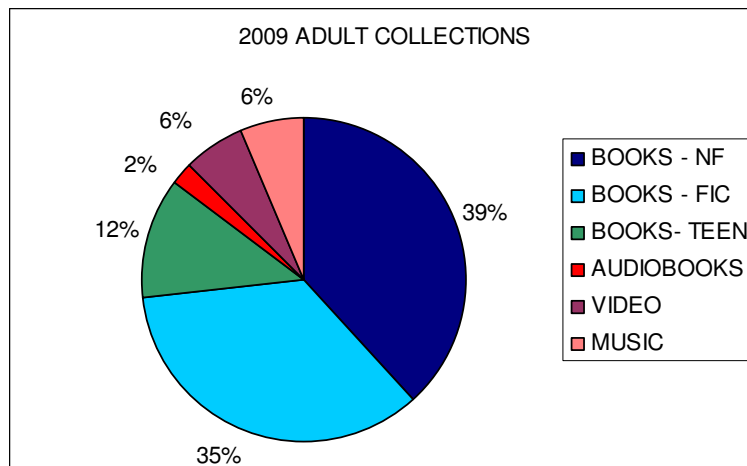
Hillsdale increased its overall collection by 2,956 items and now owns a total of 72,269 items, excluding magazine issues.

The 2009 Bergen libraries average collection was 58,698.

The 2008 state average for similar population group was 59,787

The 2008 state average for similar budget group was 61,516

Collection diversity



	2008 % OF ALL COLLECTIONS	2008 % OF ALL CIRCULATION	2009 % OF ALL COLLECTIONS	2009 % OF ALL CIRCULATION
Adult - NF	18%	7%	18%	7%
Adult - FIC	16%	11%	17%	11%
Adult - TEEN	6%	4%	6%	4%
Adult - Audiobook	1%	2%	1%	2%
Adult - Video	3%	12%	3%	12%
Adult - Music	3%	6%	3%	7%
Child - NF	10%	4%	10%	4%
Child - FIC	3%	21%	3%	20%
Child - Board/Picture/Easy	12%	12%	13%	13%
Child - Video	3%	16%	3%	15%

Collection age

Age of the collection is based upon the publication date of the items in the collection. The overall collection continues to improve. Non-fiction remains the focus of targeted weeding and development. Although many new reference and non-fiction titles have been purchased, some old classics are bringing down the averages.

	HILLSDALE 2008	HILLSDALE 2009	BCCLS 2009	WESTWOOD 2009	RIVERVALE 2009
All Collections	1998	1999	1996	2000	2000
Adult Non-fiction	1990	1991	1993	1997	1997
Adult Fiction	2002	2003	1999	2001	2001
Children's Bks	1998	1999	1995	1999	1999
Children's Med	2002	2003	2002	2002	2004
Media	2003	2003	2002	2003	2002
Reference	1985	1988	1984	1985	n/a
Young Adult	2002	2003	2001	2003	2004

III. Hours of service

The library was open 2,843 hours and 337 days in 2009.

The library was open 2,876 hours and 342 days in 2008.

The library was open 2,844 hours and 339 days in 2007.

The library was open 2,849 hours and 338 days in 2006.

The library was open 2,809 hours and 320 days in 2005.

The library was open 2,593 hours and 324 days in 2004.

The library was open 2,895 hours and 341 days in 2003.

The library was open 2,836 hours and 343 days in 2002.

Manpower

Manpower is measured in full time equivalents (FTE). A full-time work week is 35 hours. There are four (4) full-time staff members. The remaining part-time employees, including pages comprise an additional 5.7 FTE. The overall manpower is 9.8 FTE.

Part-time employee hours in 2008:

Page Hours	716
Library Assistant Hours	9,501
Sunday Librarian Hours	114
Total P-T Hours	10,330

Part-time employee hours in 2009:

Page Hours	802
Library Assistant Hours	9,601
Sun Librarian Hours	52
Total P-T Hours	10,507

FTE=35 hours x 52 weeks

1,820.00

PT FTE =

5.7

FTE=35 hours x 52 weeks

1,820.00

PT FTE =

5.8

Hillsdale expended \$358,342 on salaries and wages in 2009. When combined with benefits, social security, and insurance, personnel expenses totaled \$457,469 or 62% of the budget.

The 2008 average for Bergen libraries was \$473,270 or 64.4%

The 2008 state average for similar population group was 68.8%

The 2008 state average for similar budget group was 66%

Public Computer Usage

The library makes available 17 computer workstations for the public. Users are guaranteed up to one hour at a PC per day, but frequently longer sessions may occur depending upon demand. During the year approximately 18,643 individual sessions occurred. This is a 5% drop from 2008, however, we did operate with one fewer PC workstation in 2009. On a per-PC basis, the rate of use remained the same. Figures are based upon sign-ups at the main desk. Statistics for the children room were not generated as we currently do not register users of the kids pcs. This also does not include users of our Wi-Fi access.

Average Number of Daily Sessions.

	Monday	Tuesday	Wednesday	Thursday	Friday	Saturday	Sunday
2007	66	66	55	63	43	47	26
2008	76	72	57	70	47	48	29
2009	71	68	56	67	46	45	30

Volunteers

48 volunteers provided 2,680 hours of service.

Most volunteer hours are contributed by the members of the Pascack Valley Literacy Volunteers. Adults assist other adults in learning English as a Second Language (ESL). Annual statistics for this program are tabulated in the spring. There are currently 25 adult volunteers at the start of 2009. Doris Streich, assisted by Carolyn Borowski, is responsible for coordinating all of the tutors and students. Doris volunteers at the library between 8 and 15 hours weekly, approximately 400 hours annually. Tutors account for over 1,950 hours annually.

A list of volunteer opportunities is found on the library website.

IV. Patron registration and library use

470 people received Hillsdale Library cards in 2009. Of the 5,893 currently registered users 3,752 used their card at least once during 2009. That represents 37% of the population of the Borough. The BCCLS system-wide average is 28%. This percentage is not always a precise representation because families may use only one card to borrow materials for several family members. These are typically residents that have moved on in one way or another. Registration percentage comparisons with other towns vary widely due to variety of retention policies.

	2006	2007	2008	2009	Population
NEW REGISTRATIONS	545	458	558	470	10,087
TOTAL CARDS	7,169	6,767	5,856	5,893	
% OF POPULATION	71%	67%	58%	58%	
CARDS USED DURING YEAR	3,733	3,650	3,729	3,752	
% OF POPULATION	37%	36%	37%	37%	

V. Programs

During 2009, 2,828 people attended 155 library sponsored programs. In accordance with State Library reporting procedures, individual story time sessions are recorded as single programs. 1,332 people attended 115 programs and/or meetings sponsored by community organizations.

VI. Other activities

The staff of the library actively participates at workshops and meetings of the Bergen County Cooperative Library System and within the New Jersey Library Association. Laura Leonard is the current president of the Young Adult section of NJLA. David Franz serves as trustee on the board of the Literacy Volunteers of Pascack Valley.

2009 Awards and Honors

- Received a public relations award from the New Jersey Library Association for most creative use of “new technology.” Our website utilizes a variety of web 2.0 applications including Flickr, GoodReads, Blogger, and Feedburner.

- **2009 Statement of value**

5893 Registered Hillsdale Patrons
3752 Used their card at least once in 2009.
10087 2001 Population
58.4% Hillsdale Residents are registered users of the library.
County average is 58%

231,324 Number of items circulated by the library in 2009.
\$15.00 Conservative cost of an average library item
\$3,469,860.00 Total value of items circulated by the Hillsdale library
A return on investment of 508%

\$683,178.00 2009 budget commitment toward the library from the Borough

\$2,786,682.00 Total SAVINGS to residents of Hillsdale from the maintenance of a free public library in 2009.
This is money that can then be spent patronizing local businesses, or saved in retirement accounts, or saved toward college tuition.

If Hillsdale did not have access to a free library and residents wished to continue purchasing books for their children and their own reading interests, they would have spent **\$3,469,860.00** over the the course of 2009.

Also, bear in mind that the library provides assistance in locating materials. The library is able to locate and borrow from libraries throughout the United States. The library also supplies free access to the Internet, children's story hours, programs, and tutors for adults learning english as a second language.

2009 OPERATING BUDGET

2009 Budget Summary		2008	2008	2009	2009
		BUDGET	FINAL	BUDGET	FINAL
LIBRARY BUDGET LINES					
01 Collection Development					
0110 A - Adult Books		27,800	33,362	28,800	32,486
0111 C - Children's Books		16,000	18,455	16,000	19,017
0112 YA - Young Adult Books		6,000	6,855	6,500	6,672
0113 R - Reference Books		8,000	8,558	6,000	6,997
0114 P - Periodicals		6,200	6,295	6,200	6,712
0120 BTA- Books on Tape - Adult		6,500	6,431	6,500	6,965
0121 BTC - Books on Tape - Child		800	538	800	928
0130 MA - Music CDs - Adult/YA		4,500	2,941	4,000	3,800
0131 MC - Music CDs - Child		300	271	300	281
0140 VA - Video/DVD - Adult		7,000	7,263	8,000	8,890
0141 VC - Video/DVD - Children's		3,000	4,087	3,000	4,249
Total Collection Development		86,100	95,055	86,100	96,998
02 Maintenance & Utilities					
0210 E - Electric		33,800	34,195	41,100	32,717
0220 G - Gas		10,000	8,819	10,000	8,939
0230 T - Telephone		4,500	4,955	3,600	3,679
0240 W - Water		2,100	2,403	2,350	1,823
0250 - Repairs/ Maintenance		3,500	3,300	2,500	6,985
0260 - Service Contracts		4,425	4,781	4,700	4,445
Total Maintenance & Utilities		58,325	58,454	64,250	58,589
03 Supporting Services					
0310 - BCCLS *		20,745	20,745	22,740	22,740
0320 - Supplies		12,000	13,499	12,000	14,354
0322 - Photocopier		3,200	4,015	3,300	3,164
0325 - Postage		1,500	945	1,500	1,117
0340 - Programs		5,000	5,106	3,000	3,498
0341 - Adult ESL Program		2,000	2,000	2,000	2,000
0343 - Historical Newspapers		1,095	1,095	0	0
0350 - Memberships		300	315	350	335
0360 - Conferences/Travel		2,250	2,066	2,250	1,670
0370 - Advertising/Publicity		0	0	0	0
0380 - Audit		1,750	1,500	3,500	2,500
0390 - Recording Secretary		600	400	624	520
0392 - Professional Development		500	167	0	0
Total Supporting Services		50,940	51,853	51,264	51,898
04 State Aid					
State Aid 2006 for 2007/8		0	235		
State Aid 2007 for 2008/9		10,823	10,823		
State Aid 2008 for 2009/10 *				10,229	10,229
Total State Aid Expenditures		11,058	11,058	10,229	10,229
09 Unbudgeted Items					
0910 - Friend's Supported			3,982		5,069

	0920 - Restricted Donations	2,820		
	0930 - Miscellaneous	3,772		4,905
	0940 - Bank Charges	29		
	0950 - Refund to Patron	0		
	0960 - Reimburse Libraries	387		190
	Total Unbudgeted items	0	10,989	0
	LIBRARY LINE TOTALS	206,423	227,409	211,843
				227,877

BOROUGH BUDGET LINES

	Salaries & Wages	348,700	344,681	359,000	358,342
	Building Maintenance	44,150	50,898	46,360	29,941
	Disposal Services	650	0	1,000	1,000
	Gas and Electric*	0	0	0	0
	Telephone Charges (LD)	0	89	0	0
	Payroll Services	2,500	868	2,500	983
	Social Security	26,680	27,568	27,464	25,986
	Insurance - Life	400	343	400	374
	Insurance - Workers Comp	1,400	1,400	1,400	1,400
	Insurance - Medical	67,140	61,545	73,500	67,023
	Insurance - Dental	4,200	3,762	4,429	4,344
	Insurance - Liability	14,479	11,498	14,479	16,205
	Total Borough Budget Items	510,299	502,651	530,532	505,599

TOTAL LIBRARY EXPENSES	716,722	730,059	742,375	733,476
-------------------------------	----------------	----------------	----------------	----------------

LIBRARY INCOME	2008 BUDGET	2008 FINAL	2009 BUDGET	2009 FINAL
-----------------------	--------------------	-------------------	--------------------	-------------------

Money handled directly by Boro	510,299	502,651	530,532	505,599
Boro Cash Support	150,042	150,048	152,646	153,176
Boro Reserve Balance Prev. YR - brought forward*	0	11,298	0	0
State Aid	0	10,229	0	9,348
Balance State Aid Prev. Yr brought forward (est.)*	11,058	11,058	10,229	10,229
Used Book Sales	0	3,999	2,000	2,928
Donations	2,000	7,341	2,000	7,158
Fines	20,000	23,011	21,200	24,595
Interest (operating)	948	926	718	204
Memberships (WCL)	7,000	9,925	8,000	10,875
Net lender reimbursement	13,575	7,336	10,000	14,324
Photocopier	0	2,410	1,700	2,498
Miscellaneous	1,800	4,901	3,000	6,625

TOTAL LIBRARY INCOME	716,722	745,133	742,025	747,559
-----------------------------	----------------	----------------	----------------	----------------

* NOTE: borough did not expend \$25371.89 in 2009, will be a receivable in 2010. Total 2009 boro support of library is \$683,528.

Librarian's Appendix

Inter-Library Loan

Through the use of the statewide JerseyCat Interlibrary Loan System our library can borrow from nearly any public and academic library in the State and throughout the U.S. We are also called upon to send our unique items to other libraries in the state. In 2009 63 items were borrowed for Hillsdale patrons and we supplied 184 items to other libraries.

Reference

A sampling of reference questions with answers:

ARTS

- "I am looking for rock music DVDs." I was able to show the patron how to locate numerous DVDs using the BCCLS catalog. She checked out one from Hillsdale and ordered two others.
- "I would like to get the estimated value of an oil painting I have by Bruno Zupan." There were auction results for some of his work at artinfo.com and artvalue.com. I also found two galleries that collect and sell his works. One gallery was near the home of the patron's daughter and she was able to go speak with the owner.
- We received multiple requests for various pieces of classical sheet music. These were requested via Newark Public Library.

ASSIGNMENTS

- "I need information about current events in Sudan." I was able to give the patron two books, one on Sudan and one specifically on Darfur. I let the patron know that we had two DVDs focusing on the topic. I also directed the patron to the databases so that she could search for current articles.
- "I need information about the Charleston dance." Information was available in *The Encyclopedia of Dance; Bowling & Beatniks, and Bell-Bottoms: Pop Culture of 20th Century America*, and *American Decades: 1920s*.
- "I am looking for information regarding the Concert for Bangladesh." I helped the patron to find magazine articles. There was also brief mention of the event in a book about The Beatles.

- “I need literary criticism of *The Metamorphosis* by Kafka.” The Hillsdale library had a book available and I showed the patron how to access additional information through Infotrac’s Literary Resource Center database.

Local History/Genealogy

- “My scout troop needs to look at photos of historic homes in Hillsdale.” I directed the scout leader to the local history page of our website, <http://hillsdale.bccls.org/localhistory/localhistory.html>

Health/Medicine/Science

- “I am looking for a book that discusses how music affects the brain”. The Hillsdale Library had three books for the patron to pick from. He was satisfied with these and chose not to look for articles in the database collections.
- “I need help applying online for Social Security benefits.” I assisted an older Woodcliff Lake resident in the application process.
- “I need the phone number for the Library of Congress in Trenton because I’m partially blind.” The patron actually needed the number for the New Jersey State Library talking Book & Braille Center, which I gave her over the phone.
- “I would like to set-up a support group for care-givers of older adults. Are there any books that would help?” There were several books available through BCCLS.
- “Do you have any nursing test prep books?” The Hillsdale Library owns multiple NCLEX prep books. The patron selected two.

History

- “Do you have a book with maps, specifically Europe? You don’t have any historical atlases, do you?” Yes, we do!

Reader’s Advisory

- “I need to read a good biography for school (9th grade student).” I showed the patron the booklist of selected biographies and memoirs for high school students (<http://hillsdalelibraryteens.pbworks.com/BiosMemoirs>) that I created and helped her find some titles on the shelves.
- “I am trying to remember the name of a book about forty children in Russia during WWII that I read for a book club.” I used Novelist (part of the Ebsco database) to describe the plot. The title is *Child 44* by Tom Rob Smith.

- “I am hoping to find a biography of George Sand that is readable for a book group.” I searched for books in the BCCLS catalog and showed the patron how she could read the reviews. She selected a book and ordered a copy.

Business/Commerce/Finance

- “I need the phone number for Fruit of the Loom and the name of the CEO.” This information was obtained from the company’s website.
- “I am interested in source for government lending for businesses.” Some of the books available via BCCLS include: *The insiders guide to small business loans*; *Lesko’s free money for entrepreneurs*; *SBA loans*. I also directed the patron to The New Jersey Office for Economic Growth and The Bergen County Development Corporation.

Miscellaneous

- “I would like the cover image of a particular edition of “Republic of Plato” edited by Cornford.” The book was located on amazon.com and requested via inter-library loan.
- “I like to look at old B&W photos, can you recommend any websites?” There are many sites, but I started him off with www.memory.loc.gov and <http://images.google.com/hosted/life>
- “How did the Bushes decorate the White House?” I located articles in various newspapers, the best of which was in the style section of the Wall Street Journal and photos on the whitehouse.gov, under tours.

TEEN SUMMER READING REPORT

The program is designed for students entering grades 7-12.

71 students registered and 44 of those completed the program. I was excited that 31 students joined for the first time this year! 20 boys joined the program. This number is still lower than I would like. I will continue to make an effort to attract more boys to the library.

Students were required to keep a log of the number of pages they read and received prizes at the end of the summer. The teens continue to amaze me with how much they read. Approximately 240,765 pages were recorded, with one teen reading 28,511 pages!! The average teen read 5,471 pages this summer, which is equivalent to approximately twenty books.

In addition, twenty special events were offered. These included a library late night to start off the summer and a wrap-up party in early September to celebrate and distribute prizes. Those two events had the highest attendance with 24 and 33 teens respectively. In total, 207 teens came to library events during the summer.

This program would not be possible without the support of the library staff, especially David Franz, The Board of Trustees, and The Friends of The Library.

TEEN PROGRAMS

This year two new programs have been introduced. I am particularly excited because both programs involve collaborations with the schools.

The first is Pizza & Pages. This is a book club for seventh & eighth grade students at George White Middle School. I approached Joyce Bombay, the media specialist at George White to see if she would be interested in co-sponsoring a lunch-time books club. She was interested, so next I submitted a proposal to Noreen Hajinlian, the principal. The club was approved and met for the first time in October. The group meets during lunch to discuss the title for that month. Books are ordered through BCCLS and students pick them up at the public library. I create discussion questions prior to the meeting which I share with Mrs. Bombay. As of writing this, we have met four times and the attendance has been 17-21 students. Pizza is provided with money from The Friends of The Hillsdale Library and the George White FFA. The discussions have been lively and the students are very engaged.

The second new program is RAWR, a book club at Pascack Valley High School. This club meets monthly after school and was created by a high-school senior who also happens to be a library page and long-time TAG member. The student founder selects the titles, creates the questions, and handles reminder notifications. I go to PV for the discussions and order copies of the books for students to pick up at the public library.

In addition to the newly added book clubs there are numerous programs offered to teens throughout the year. These include ongoing programs such as: Teen Advisory Group and The Manga-Anime Club. Other events such as: game nights, craft programs, chocolate parties, mystery nights, booknics, and movie screenings occur periodically.

I would like to highlight the efforts of the TAG to raise funds for the All Wrapped Up program

sponsored by the Volunteer Center of Bergen County. This is the second year the TAG has “adopted” a teen in need for the holidays. TAG sponsored a two-day bake sale which raised \$150. Teen volunteers created an over-sized holiday card, baked, and worked at the table.

All told 659 teens participated in 59 programs during the course of the year.

PROFESSIONAL DEVELOPMENT

This year I am serving as President Elect of the Young Adult Section of NJLA. I am responsible for setting all meeting agendas, running meetings, and coordinating with other NJLA sections as needed. I will be assisting the Vice President with presenter arrangements for the annual NJLA conference in April. My term runs from July 2009 – June 2010.

Respectfully submitted,

Laura Leonard
Reference / Teen Librarian

Highlights from the 2008 New Jersey Library Analyses published by the State Library.

<http://www.njstatelib.org/LDB/Statistics/2008-data.php>

Averages within Population Served Range 10K - 15K

* = represents the maximum total in the range of libraries. (53 libraries)

	State Average	Hillsdale
Total Budget	691,261	730,060
Local Municipal Support	652,661	660,341
Annual Circulation	83,526	221,327
Circulation per FTE	8,901	22,817 *
Circulation per Capita	6.9	21.9 *
FTE	9	9.7
Volumes Owned	59,787	69,313
\$ spent on Materials	79,087	100,715
\$ spent on Personnel	449,950	439,300
Hours Open Weekly	57.1	55.3

Averages within Budget Expenditure Range \$500K - \$750K

* = represents the maximum total in the range of libraries. (40 libraries)

	State Average	Hillsdale
Total Budget	716,947	730,060
Local Municipal Support	680,505	660,341
Annual Circulation	82,964	221,327 *
Circulation per FTE	9,467	22,817 *
Circulation per Capita	8.4	21.9
FTE	9	9.7
Volumes Owned	61,516	69,313
\$ spent on Materials	87,702	100,715
\$ spent on Personnel	425,308	439,300
Hours Open Weekly	56.9	55.3